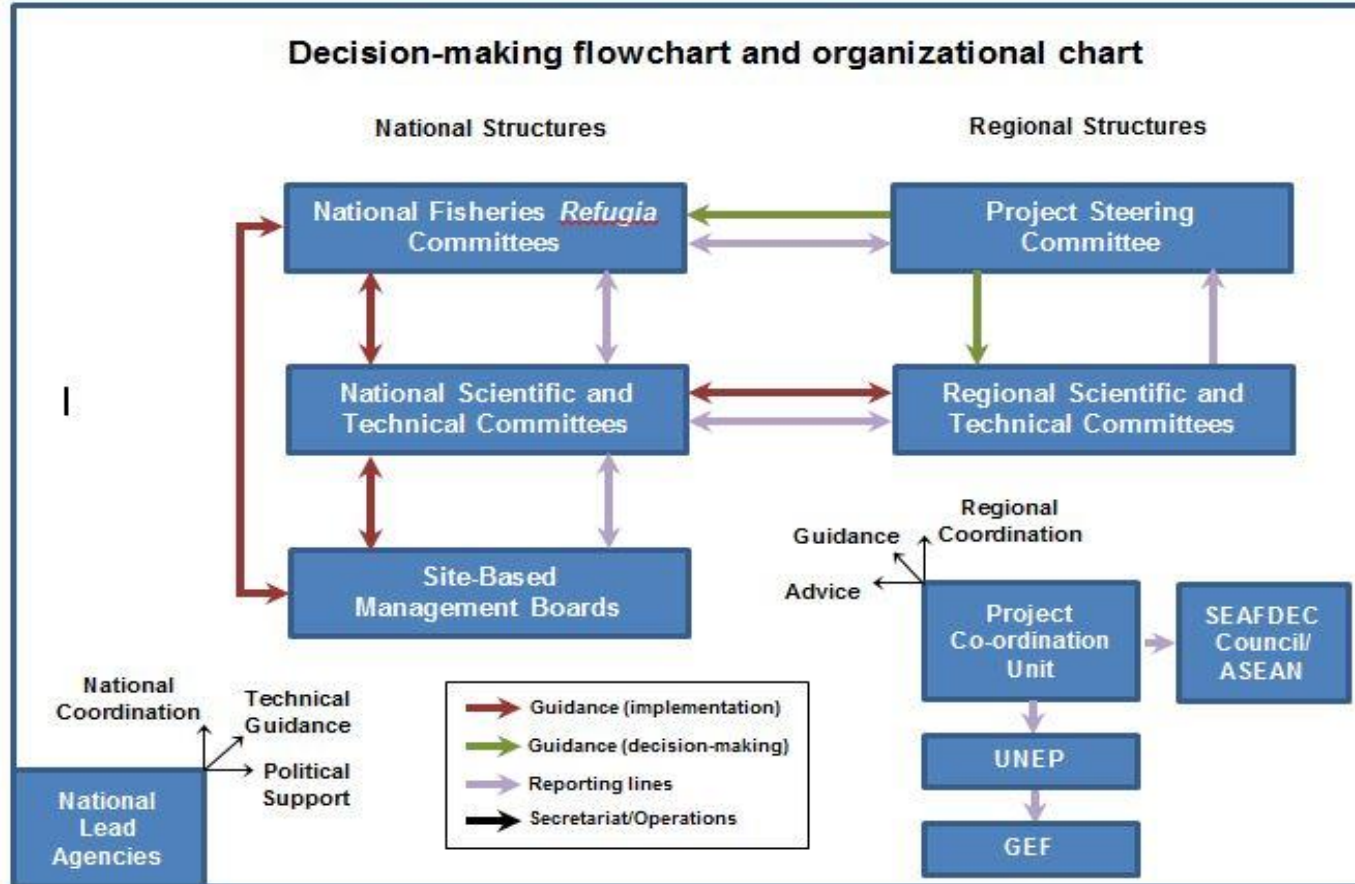




TERMS OF REFERENCE for Establishment of the Institutions at Regional Level

Presented by : Dr. SOMBOON SIRIRAKSOPHON



PROJECT STEERING COMMITTEE



REGIONAL SCIENTIFIC & TECHNICAL COMMITTEE

- Provide direction and guidance to the PCU) & National Lead Agencies
- Meet on an annual basis;
- Receive, review, and approve reports from the PCU
- Assist the PCU to further enhance national capacity
- Review stakeholder involvement in project activities
- Ensure compatibility between the activities of site and other national level activities
- Assist the PCU in leveraging required project co-financing and additional funds
- Work with the PCU & National Lead Agencies in mainstreaming integrated fisheries & environmental management

PROJECT STEERING COMMITTEE



REGIONAL SCIENTIFIC & TECHNICAL COMMITTEE (WP1c)

REGIONAL ACTIVITIES:

- Review & Coordinate RST activity
- Review, evaluate, and progress in implementation of NATIONAL ACT;
- Provide PSC with recomm. On proposed regional activities;
- Provide PSC with recomm. and technical guidance to improve act.
- Monitor the progress of the Project's regional activities;

NATIONAL ACTIVITIES:

- Review, evaluate, progress in implementation of the project;
- Receive, review, and comment on drafts of national policies and/or action frameworks;
- Advise the PCU and NFP of the need for public awareness and information materials

PROPOSED MEMBERSHIP FOR THE REGIONAL SCIENTIFIC & TECHNICAL COMM

- ✓ Chairpersons of the National Scientific and Technical Committees
- ✓ Representative of SEAFDEC;
- ✓ Regional Experts; and
- ✓ SEAFDEC's Project Coordinating Unit (PCU)

RULE OF PROCEDURE

- ✓ Committee shall elect a Chairperson and a Vice-Chair from amongst the members;
- ✓ The Vice-Chair shall act as Chairperson of meetings in the absence of the Chairperson;
- ✓ The Chairperson and Vice-Chair shall participate in the annual meeting of the PSC at which they shall present the reports & recommendations of RSTC.